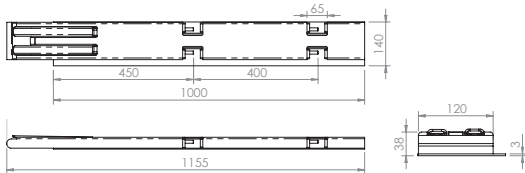


# Klepsluitingen Fermeture de ridelle



## Rongen staal / Montants de ridelle acier

C3.2 : 1160899

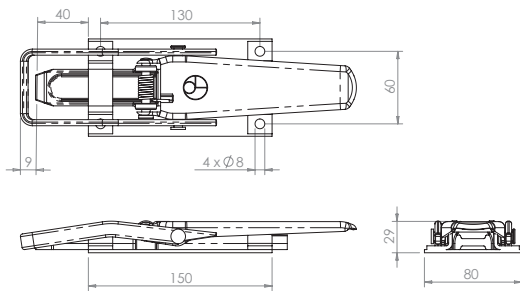


**Stalen achterrong rechts 1000 mm.  
Gewicht: 15,69 kg**

Montant de ridelle arrière, acier, droite  
1000 mm.  
Poids: 15,69 kg

## Klepaantrekker opbouw verzinkt / Tire-ridelle apparent galvanisé

C3.3 : 1145560

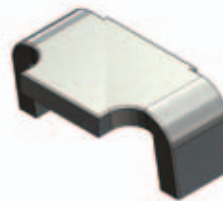
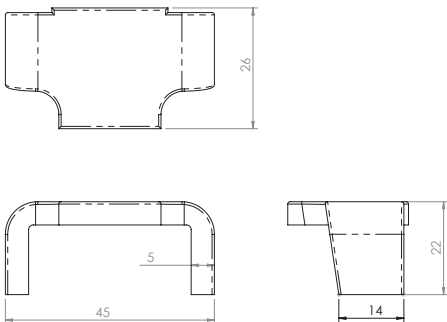


**Opbouwsluiting gegalvaniseerd.  
Gewicht: 1,06 kg**

Fermeture en applique, galvanisé.  
Poids: 1,06 kg

## Klepaantrekker opbouw verzinkt / Tire-ridelle apparent galvanisé

C3.3 : 1145561

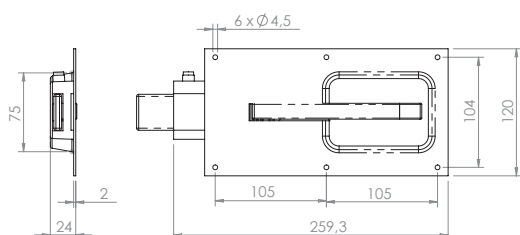


**Beugel voor 1145560 H = 17 mm.  
Gewicht: 0,05 kg**

Etrier pour 1145560, h = 17 mm.  
Poids: 0,05 kg

## Klepaantrekker inbouw aluminium / Tire-ridelle encastré aluminium

C3.4 : 1145235



**Inbouwsluiting aluminium 25 mm.  
Gewicht: 0,95 kg**

Fermeture encastrée, aluminium  
25 mm.  
Poids: 0,95 kg