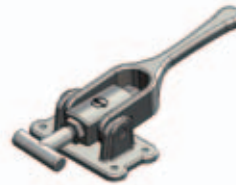
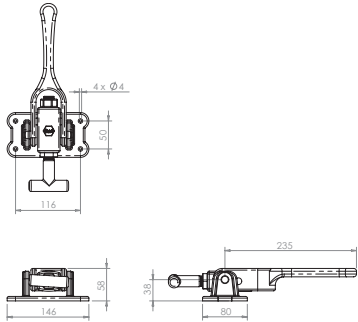




## Excentersluiting heavy duty / Fermeture à excentrique robuste

C3.5 : 1141340

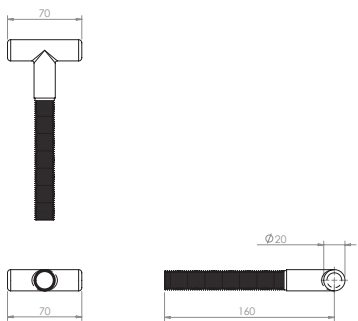


**Excentersluiting hd7.  
Gewicht: 3,20 kg**

Fermeture à excentrique hd7.  
Poids: 3,20 kg

## Excentersluiting heavy duty / Fermeture à excentrique robuste

C3.5 : 1141341

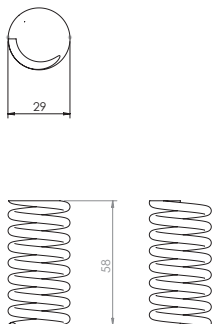


**T-stuk voor 1141340.  
Gewicht: 0,46 kg**

Té pour 1141340.  
Poids: 0,46 kg

## Excentersluiting heavy duty / Fermeture à excentrique robuste

C3.5 : 1141342

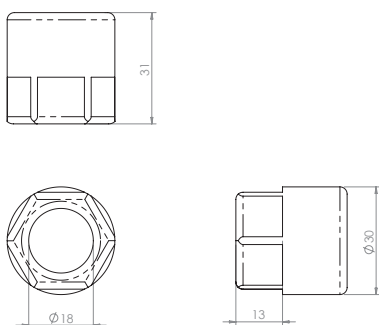


**Drukveer voor 1141340.  
Gewicht: 0,08 kg**

Ressort de pression pour 1141340.  
Poids: 0,08 kg

## Excentersluiting heavy duty / Fermeture à excentrique robuste

C3.5 : 1141343



**Zeskantmoer speciaal voor  
1141340.  
Gewicht: 0,10 kg**

Ecrou à six pans spécial pour  
1141340.  
Poids: 0,10 kg



# Klepsluitingen

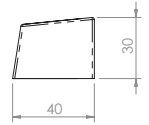
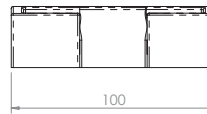
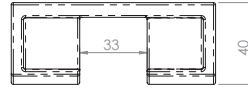
## Fermeture de ridelle

C3.5: 1141345

Excentersluiting heavy duty / Fermeture à excentrique robuste

Treknok voor hd7.  
Gewicht: 0,45 kg

Came de traction pour hd7.  
Poids: 0,45 kg

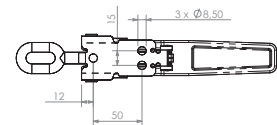
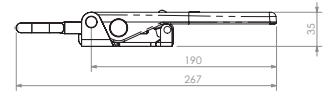
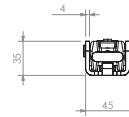


C3.1: 1145300

Klepaantrekkers opbouw verzinkt / Fermeture en applique ensembles galvanisée

Klepsluiting nastelbaar.  
Gewicht: 0,90 kg

Fermeture ridelle réajustable.  
Poids: 0,90 kg

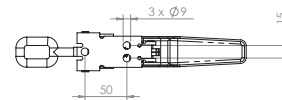
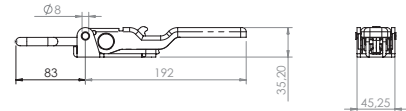
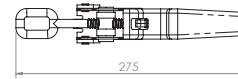


C2.1: 1145580

Klepaantrekkers opbouw verzinkt / Fermeture en applique ensembles galvanisée

Klepsluiting.  
Gewicht: 0,63 kg

Fermeture de ridelle.  
Poids: 0,63 kg

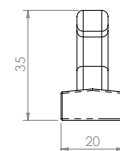
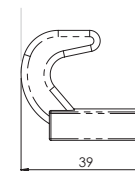
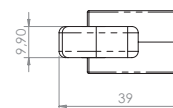


C2.1: 1145581

Klepaantrekkers opbouw verzinkt / Fermeture en applique ensembles galvanisée

Klephaak voor 1145580.  
Gewicht: 0,08 kg

Crochet de ridelle pour 1145580.  
Poids: 0,08 kg

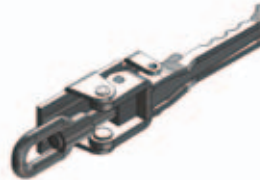
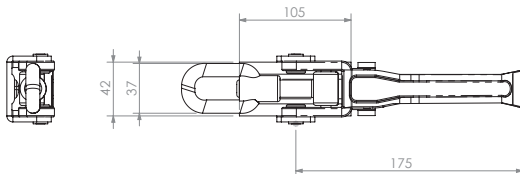


# Klepsluitingen Fermeture de ridelle



## Excentersluiting heavy duty / Fermeture à excentrique robuste

C3.5 : 1141346

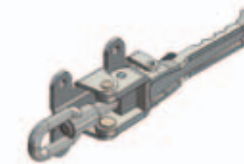
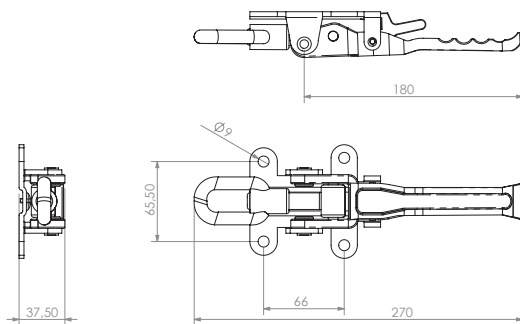


**Excentersluiting lasbaar.**  
**Gewicht: 1,40 kg**

Fermeture extrie à souder.  
Poids: 1,40 kg

## Excentersluiting heavy duty / Fermeture à excentrique robuste

C3.5 : 1141347

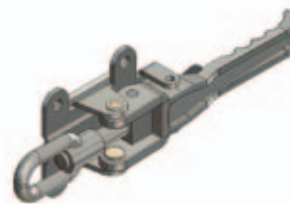
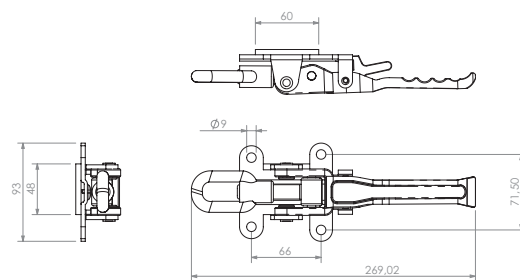


**Excentersluiting (met beveiliging).**  
**Gewicht: 1,40 kg**

Fermeture à excentrique (avec dispositif de sûreté).  
Poids: 1,40 kg

## Excentersluiting heavy duty / Fermeture à excentrique robuste

C3.5 : 1141348

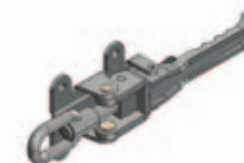
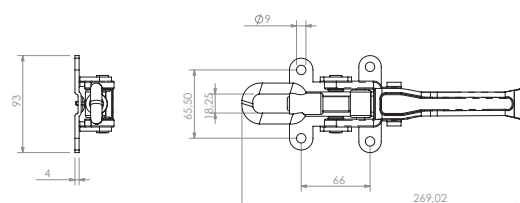


**Excentersluiting grondplaat**  
**60 x 48 mm.**  
**Gewicht: 0,59 kg**

Platine pour fermeture à excentrique  
60 x 48 mm.  
Poids: 0,59 kg

## Excentersluiting heavy duty / Fermeture à excentrique robuste

C3.5 : 1141349



**Excentersluiting (zonder zekering).**  
**Gewicht: 1,40 kg**

Fermeture à excentrique (sans dispositif de sûreté).  
Poids: 1,40 kg



# Klepsluitingen

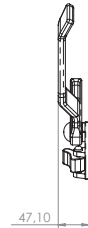
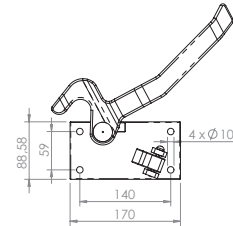
## Fermeture de ridelle

C3.5: 1141480

Excentersluiting heavy duty / Fermeture à excentrique robuste

Sluitting rapid h115s links.  
Gewicht: 1,95 kg

Fermeture 'rapid' h115s, à gauche.  
Poids: 1,95 kg

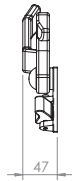
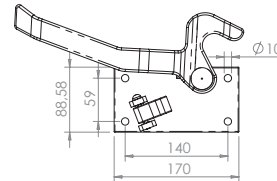


C3.5: 1141481

Excentersluiting heavy duty / Fermeture à excentrique robuste

Sluitting rapid h115s rechts.  
Gewicht: 1,95 kg

Fermeture 'rapid' h115s, à droite.  
Poids: 1,95 kg

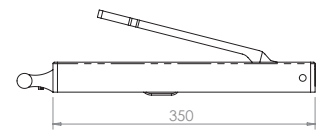
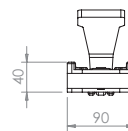


C3.5: 1160360

Excentersluiting heavy duty / Fermeture à excentrique robuste

Inslagrong H = 12 B = 90 compleet.  
Gewicht: 6,50 kg

Montant de ridelle enfoncé  
H = 12 B = 90 complète.  
Poids: 6,50 kg



C3.5: 1160361

Excentersluiting heavy duty / Fermeture à excentrique robuste

Inslagrong H = 12 B = 105 compleet.  
Gewicht: 7,50 kg

Montant de ridelle enfoncé H= 12  
B = 105 complète.  
Poids: 7,50 kg

